



# BELET HAWA DISTRICT

PROJECT:

## PROPOSED INSTALLATION OF STREET LIGHT - BELET HAWA DISTRICT -

CONSULTANT



IOM International Organization for Migration  
OIM Organisation Internationale pour les Migrations  
OIM Organización Internacional para las Migraciones

## SOMALI STABILIZATION INITIATIVES

GOVERNMENT



**SOMALI REPUBLIC**  
**Federal Government**

**PROPOSED INSTALLATION OF STREETLIGHTS**  
**ALONG DOLOW ROAD IN BELET XAWA**  
**- BELET XAWA DISTRICT -**

PROJECT N<sup>o</sup>:

IOM GRANT N<sup>0</sup>:

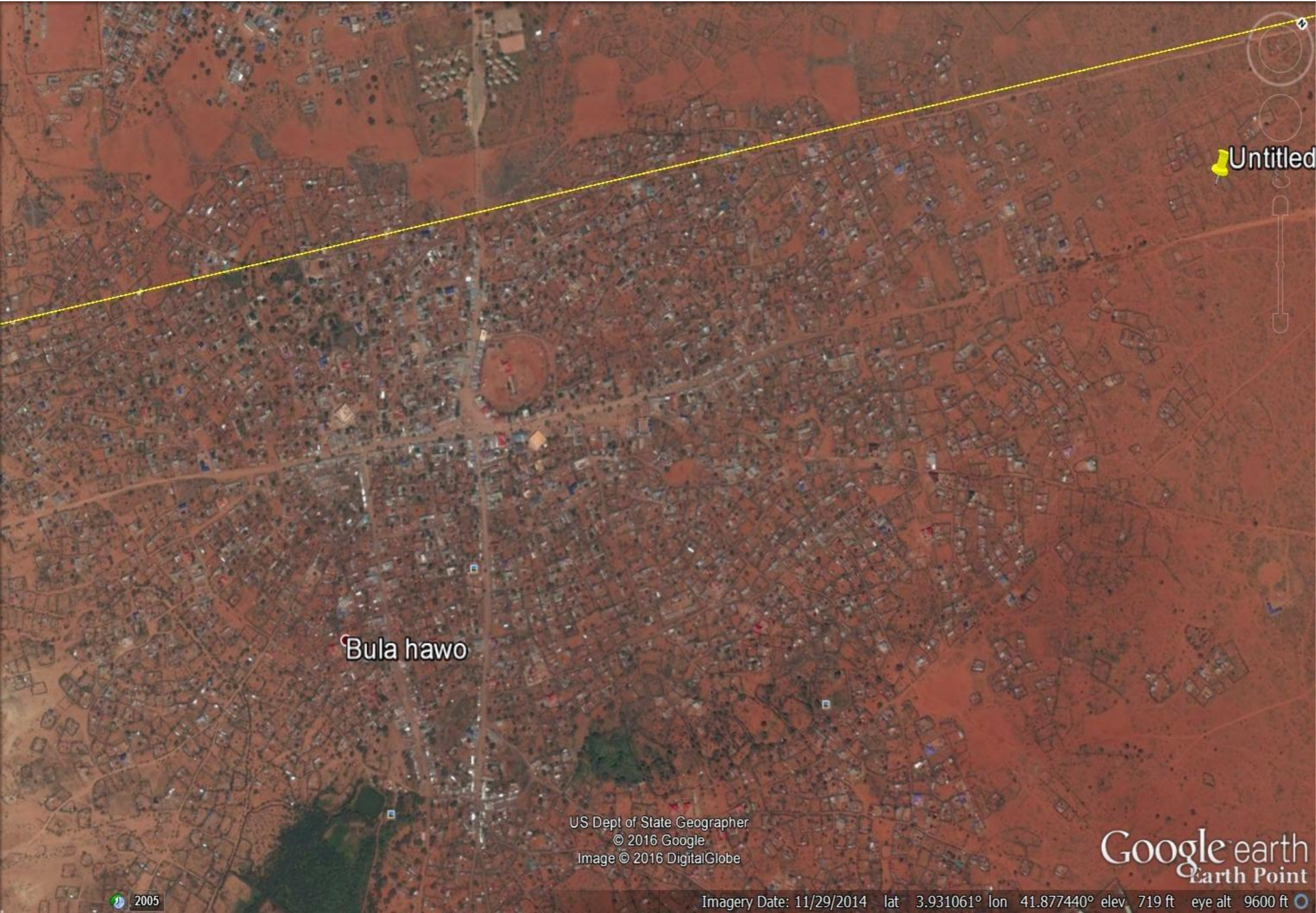
DEC 2016

## DRAWING INDEX



**SIGNED & STAMPED:**

[illegible]



LABEL:	LOCATION:
<b>A</b> N 03 56 34.7228" E 041 52 57.0473"	Point A - Start Point
<b>B</b> N 03 55 42.8279" E 041 52 26.4102"	Point B - Mid Point
<b>C</b> N 03 55 3.1606" E 041 51 59.1035"	Point C - End Point

PROJECT LIMITS(Length=2 Kilometers)

SITE PHOTOS



PROJECT.  
PROPOSED INSTALLATION OF  
STREETLIGHTS ALONG MAIN ROAD  
  
-BELET XAWA  
DISTRICT-

SCALE	NTS
DATE	DECEMBER 2016
DRAWN BY:	J. NANDWA
REVIEWED BY:	J. NANDWA
APPROVED BY:	

DRAWING TITLE:
SITE ANALYSIS
DRAWING N <sup>o</sup> :
PROJECT N <sup>o</sup> :
IOM GRANT N <sup>o</sup> :

SITE ANALYSIS
SHEET N <sup>o</sup> :
03/07
A3



PROJECT.

PROPOSED INSTALLATION OF  
STREETLIGHTS ALONG MAIN ROAD

-BELET XAWA  
DISTRICT-

SCALE	NTS
DATE	DECEMBER 2016
DRAWN BY:	J. NANDWA
REVIEWED BY:	J. NANDWA
APPROVED BY:	

DRAWING TITLE:
SITE PHOTOS
DRAWING N <sup>o</sup> :
PROJECT N <sup>o</sup> :
IOM GRANT N <sup>o</sup> :

SITE PHOTOS

SHEET N<sup>o</sup>:

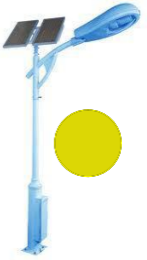
04/07

A3

# FULL - STRETCH TRAVERSE PLAN

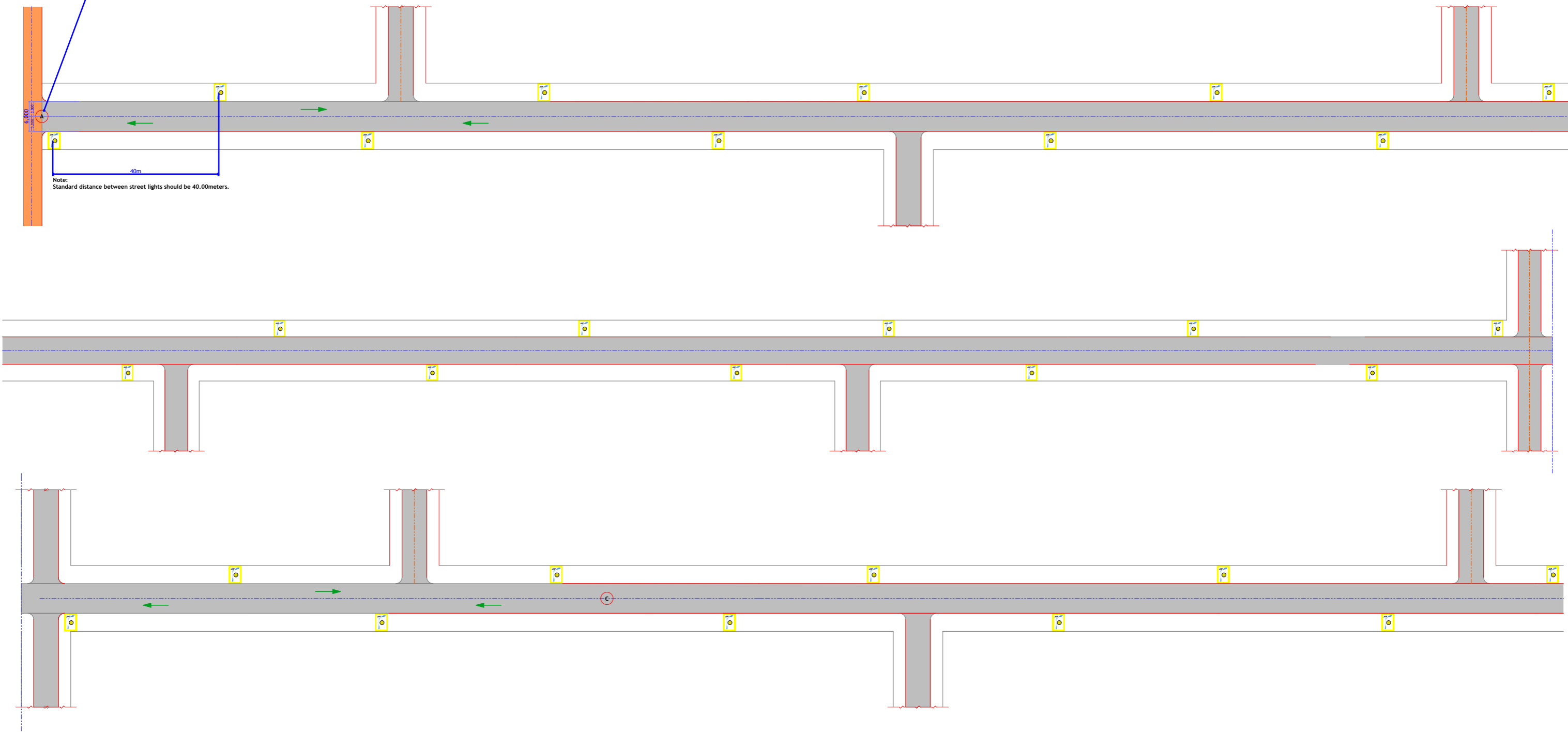
(Length=2 Kilometers)

LEGEND:



PROPOSED LOCATION OF SOLAR STREET LIGHT  
(50 Units)

Beginning of Project  
Point A



PROJECT.  
PROPOSED INSTALLATION OF  
STREETLIGHTS ALONG MAIN ROAD  
  
-BELET XAWA  
DISTRICT-

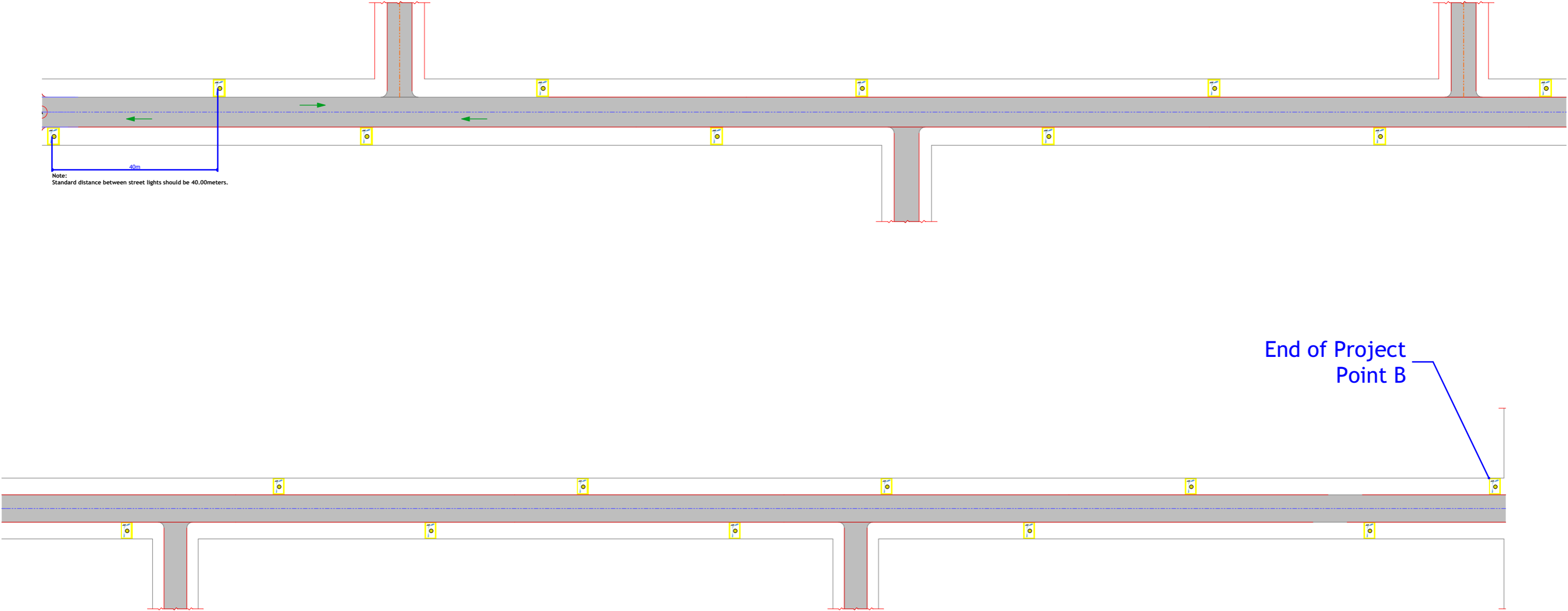
SCALE	NTS
DATE	DECEMBER 2016
DRAWN BY: J. NANDWA	
REVIEWED BY: J. NANDWA	
APPROVED BY:	

DRAWING TITLE:	TRAVERSE PLAN
DRAWING N <sup>o</sup> :	
PROJECT N <sup>o</sup> :	
IOM GRANT N <sup>o</sup> :	

TRAVERSE PLAN
SHEET N <sup>o</sup> :
05/07
A3

# FULL - STRETCH TRAVERSE PLAN

(Length=2 Kilometers)



PROJECT.

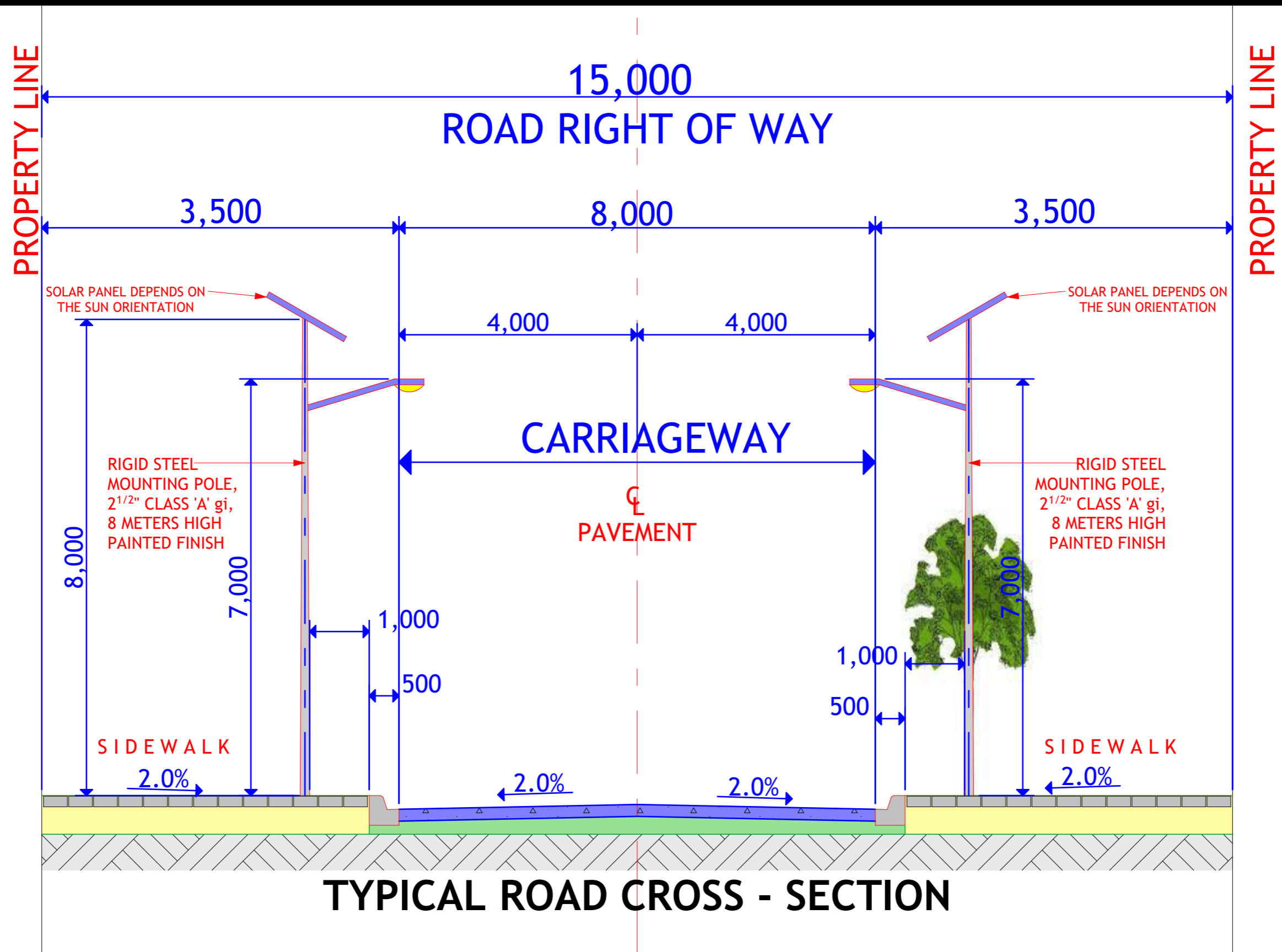
PROPOSED INSTALLATION OF  
STREETLIGHTS ALONG MAIN ROAD

-BELET XAWA  
DISTRICT-

SCALE	NTS
DATE	DECEMBER 2016
DRAWN BY:	J. NANDWA
REVIEWED BY:	J. NANDWA
APPROVED BY:	

DRAWING TITLE:	TRAVERSE PLAN
DRAWING N <sup>o</sup> :	
PROJECT N <sup>o</sup> :	
IOM GRANT N <sup>o</sup> :	

SHEET N <sup>o</sup> :
A3



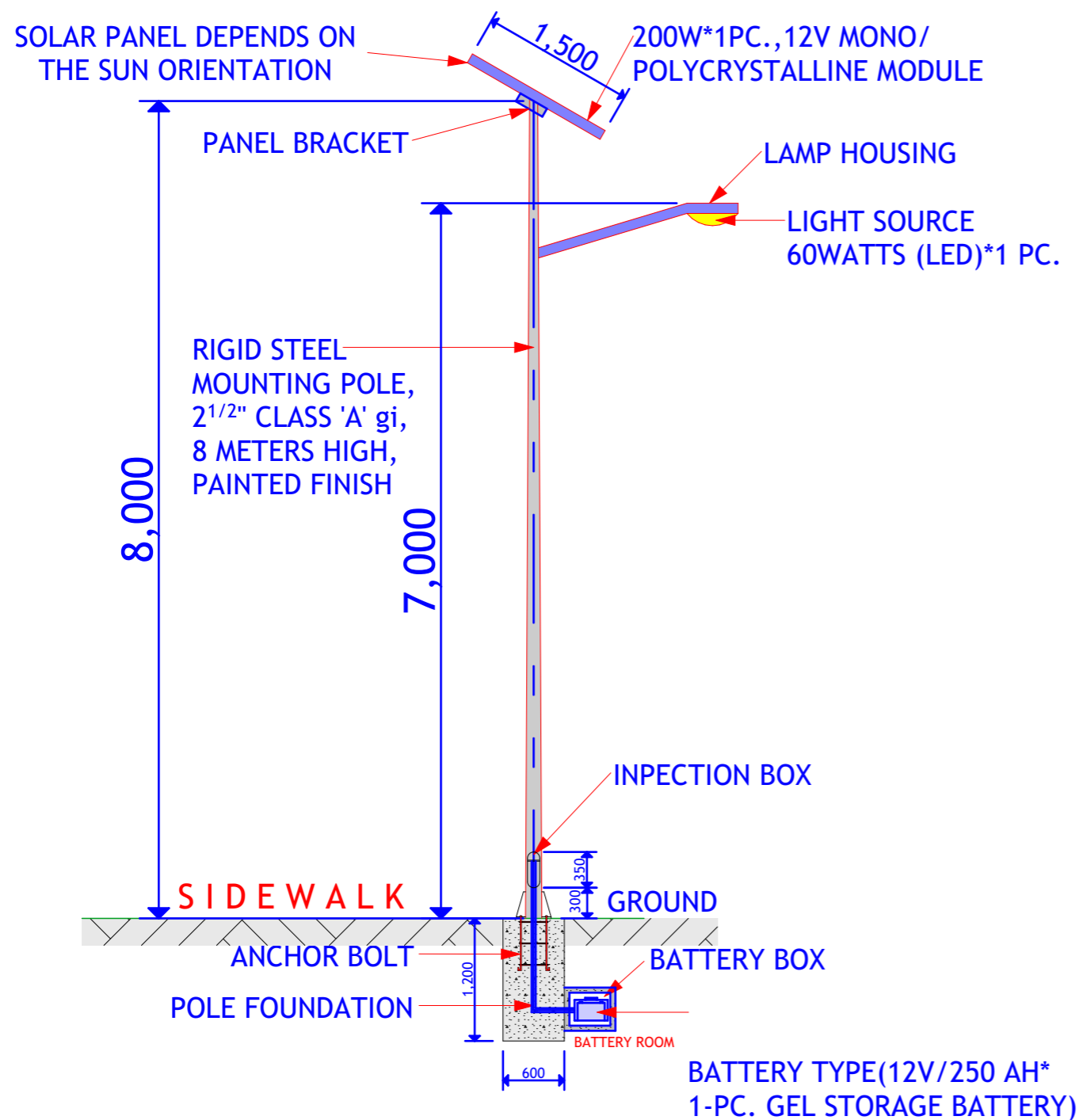
TYPICAL ROAD CROSS - SECTION

PROJECT.  
PROPOSED INSTALLATION OF  
STREETLIGHTS ALONG MAIN ROAD  
  
-BELET XAWA  
DISTRICT-

SCALE NTS  
DATE DECEMBER 2016  
  
DRAWN BY: J. NANDWA  
REVIEWED BY: J. NANDWA  
APPROVED BY:

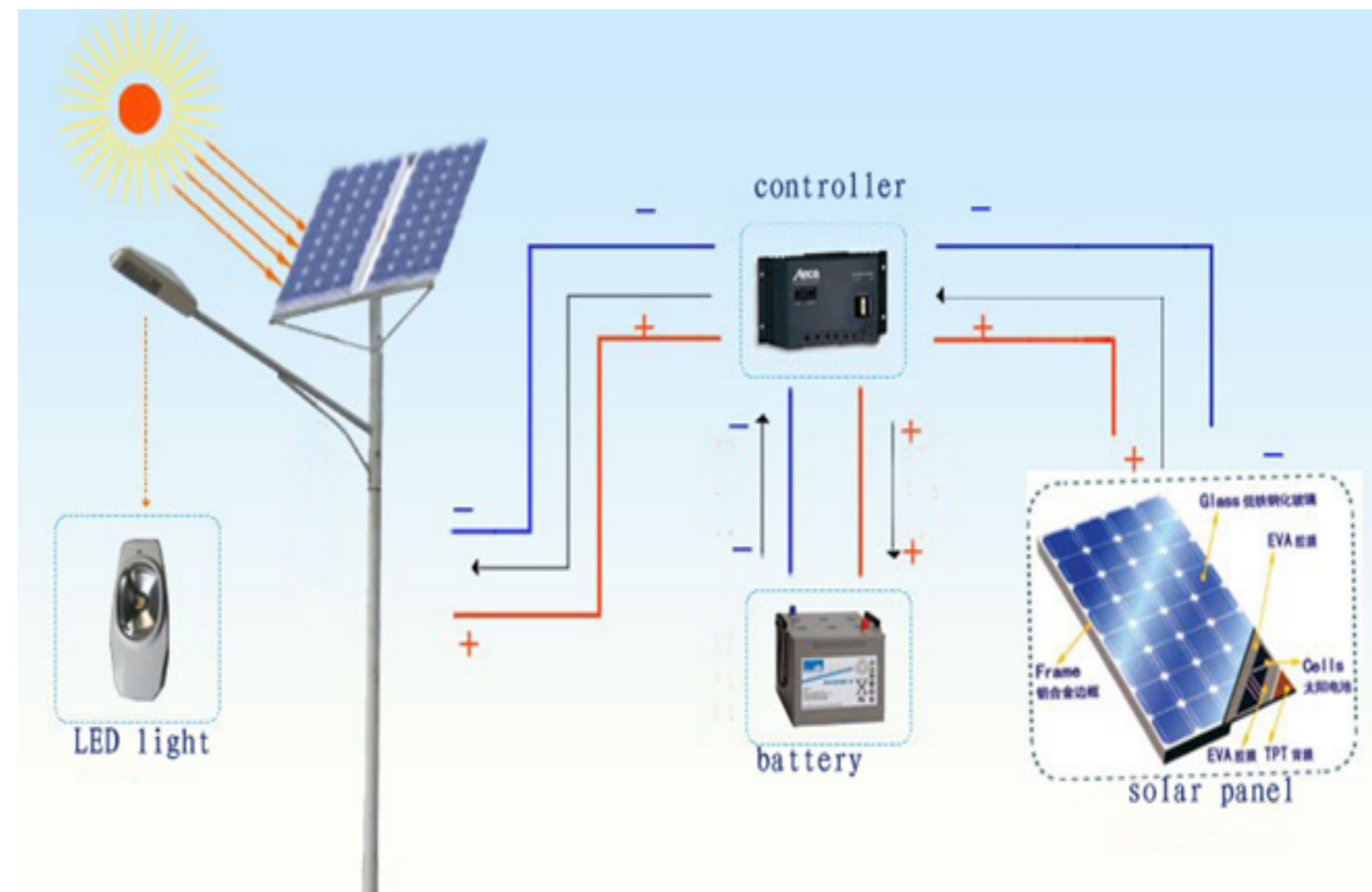
DRAWING TITLE:  
ROAD CROSS-SECTION  
DRAWING N°:  
PROJECT N°:  
IOM GRANT N°:

ROAD CROSS-SECTION  
  
SHEET N°:  
06/07  
A3



## SOLAR STREET LIGHT (AS PER MANUFACTURER'S DETAILS)

S O L A R   L A M P		60W SINGLE LED SOLAR STREET LIGHT SYSTEM SPECIFICATION
ORDINAL NUMBER	C O M P O N E N T S	PARAMETER GENERAL SITUATION
01	SOLAR PANEL	200W*1PC. MONO/POLYCRYSTALLINE SILICON
02	BATTERY	12V/250AH*1-PC. GEL STORAGE BATTERY
03	LIGHT SOURCE SOCKET	60WATTS ( LED ) * ONE(1) PC.
04	CONTROLLER	24VOLTS/20AMPERES
05	TEMPERATURE	-40 - 50 DEGREE CELSIUS
06	LIGHTING TIME	3 RAINY DAYS, EVERYDAY 12 HOURS
07	HEIGHT	EIGHT METERS (8M)
08	BATTERY BOX ( <b>PLASTIC</b> )	ONE(1) SET ( TO BE PUT UNDERGROUND )
09	ACCESSORIES,CABLE,ETC.	ONE(1) SET



**PROJECT.**  
PROPOSED INSTALLATION OF  
STREETLIGHTS ALONG MAIN ROAD  
  
-BELET XAWA  
DISTRICT-

SCALE **NTS**  
DATE **DECEMBER 2016**  
  
DRAWN BY: **J. NANDWA**  
REVIEWED BY: **J. NANDWA**  
APPROVED BY:

**DRAWING TITLE:**  
DETAILS & SPECIFICATIONS  
**DRAWING N<sup>o</sup>:**  
**PROJECT N<sup>o</sup>:**  
**IOM GRANT N<sup>o</sup>:**

**DETAILS & SPECS**

**SHEET N<sup>o</sup>:**

**07/07**

**A3**